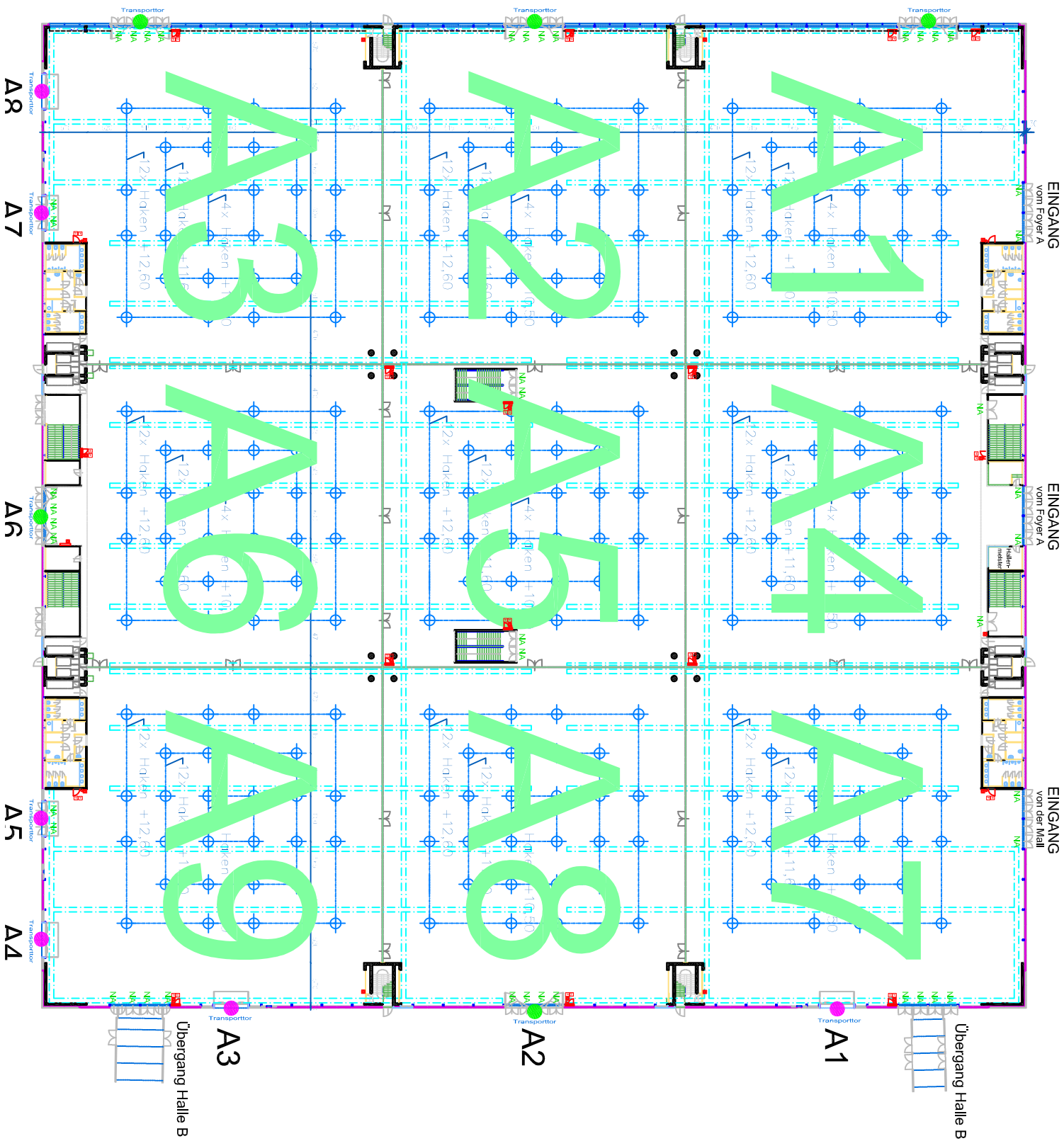


Hall characteristics

4-7 February 2013

Reed Messe Wien, Vienna, Austria

	Hall A	Hall B
Usable hall height		<i>Areas of restricted height: 4m (See Plan)</i>
Building height limit	6m	6m
Pillars / diameter	Yes, 80cm	Yes, 80cm
Loading Door Limits	H: 4.40m and 4.50m	H: 4.40m
	W: 4.50m and 6.20m	W: 5.70m
Floor Weight Limit	1600 kg/sqm	5000 kg/sqm
Electrics	Yes - inside media channels on the floor	Yes - inside media channels on the floor
Water & Waste	Yes - inside media channels on the floor	Yes - inside media channels on the floor
Internet and phone	Yes - inside media channels on the floor	Yes - inside media channels on the floor
Hanging possibilities	Yes, no restrictions but subject to approval <i>(Rigging height limit 8m)</i>	Yes, no restrictions but subject to approval <i>(Rigging height limit 8m. NB some areas of restricted height - see plan)</i>
Features	Lunch area Coffee and seating areas	Lunch area Visitor restaurant Coffee and seating areas
Double decker rules	See separate document on regulations for double decker stands in Messe Wien	



HALLE A

Transportore

- Höhe = 4,40m , Breite = 4,50 m
- Höhe = 4,50m , Breite = 6,20 m

LEGENDE

NA	...Notausgang
H	...Wasserschlauch
F	...Feuerlöscher
●	...Brandmelder
●	...Säule (DM 80cm)

Maximale Last pro Aufhängepunkt=10000kg

ACHTUNG:
Aufgrund der Anzahl der mobilen Trennwände, ist eine komplette Neuteilung der Halle nicht möglich!

Übergang Halle B

Übergang Halle B

A3

A2

A1

A1

A5

A6

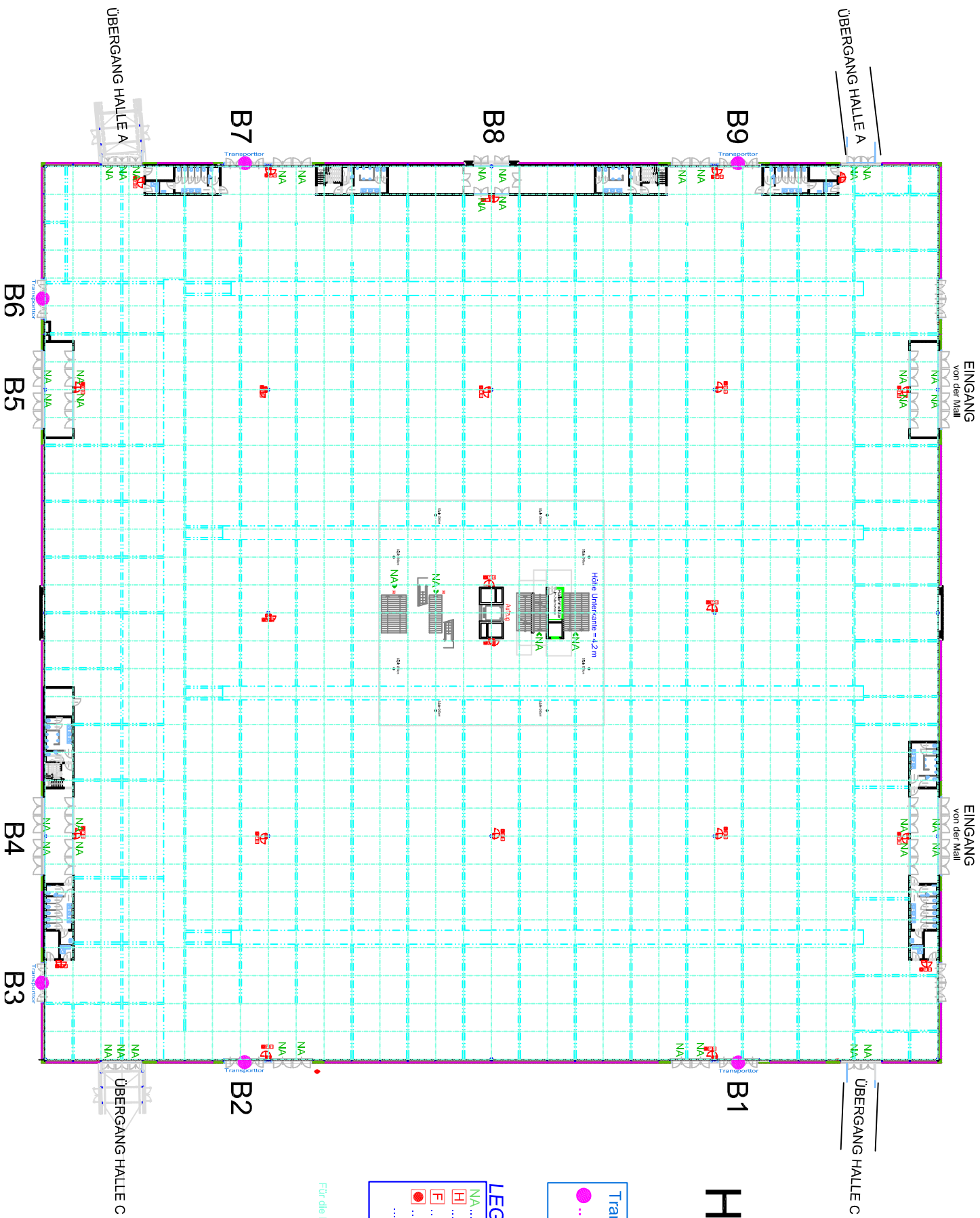
A7

A8

EINGANG vom Foyer A

EINGANG vom Foyer A

EINGANG von der Mail



HALLE B

Transportore
 ● ...Höhe = 4,40 m , Breite = 5,70 m

LEGENDE

- NA ...Notausgang
- H ...Wasserschlauch
- F ...Feuerlöscher
- ...Brandmelder
- ...Säule (DM 40cm)

Für die Hängepunkte werden M 16 Ringschrauben benötigt